

Community Consultative Committee – May 2024

15 May 2024



WELCOME AND APOLOGIES



Welcome

Apologies

Declaration of interests

Confirmation of previous minutes

AGENDA



- 1. Actions from previous meeting**
- 2. Correspondence**
- 3. Operational update**
- 4. Approvals**
- 5. Business Arising**
- 6. Environmental Incidents / Non-compliances**
- 7. Environmental Performance**
- 8. Community Complaints & Enquiries**
- 9. Environmental Projects**

ACTIONS / BUSINESS ARISING FROM PREVIOUS MINUTES



Action / Business Arising	Action Owner	Update
Nil	-	-

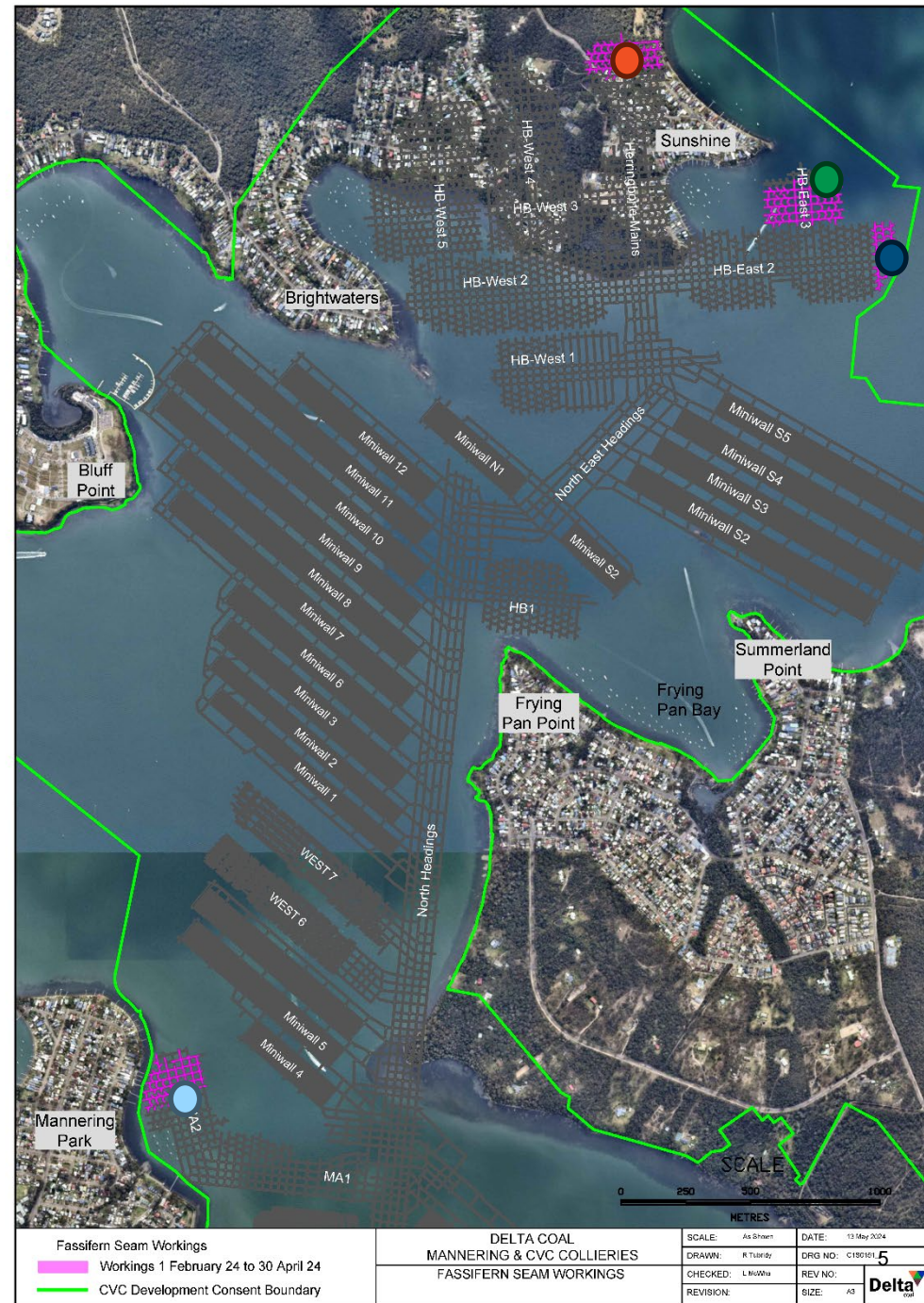
Correspondence since previous meeting

- Agenda issued by MMH to CCC members on 1 May 2024.

OPERATIONAL UPDATE

Production

- Production continues in HB-Mains
- Production in E2 panel ceased.
- Mar 24 commenced in E3 Panel
- Production continues in MA2 panel.
- Production 1 Feb 24 to 30 April 24 was 248,633 t ROM Coal.
- All coal delivered to Power Station.



Current Approvals

Chain Valley Colliery

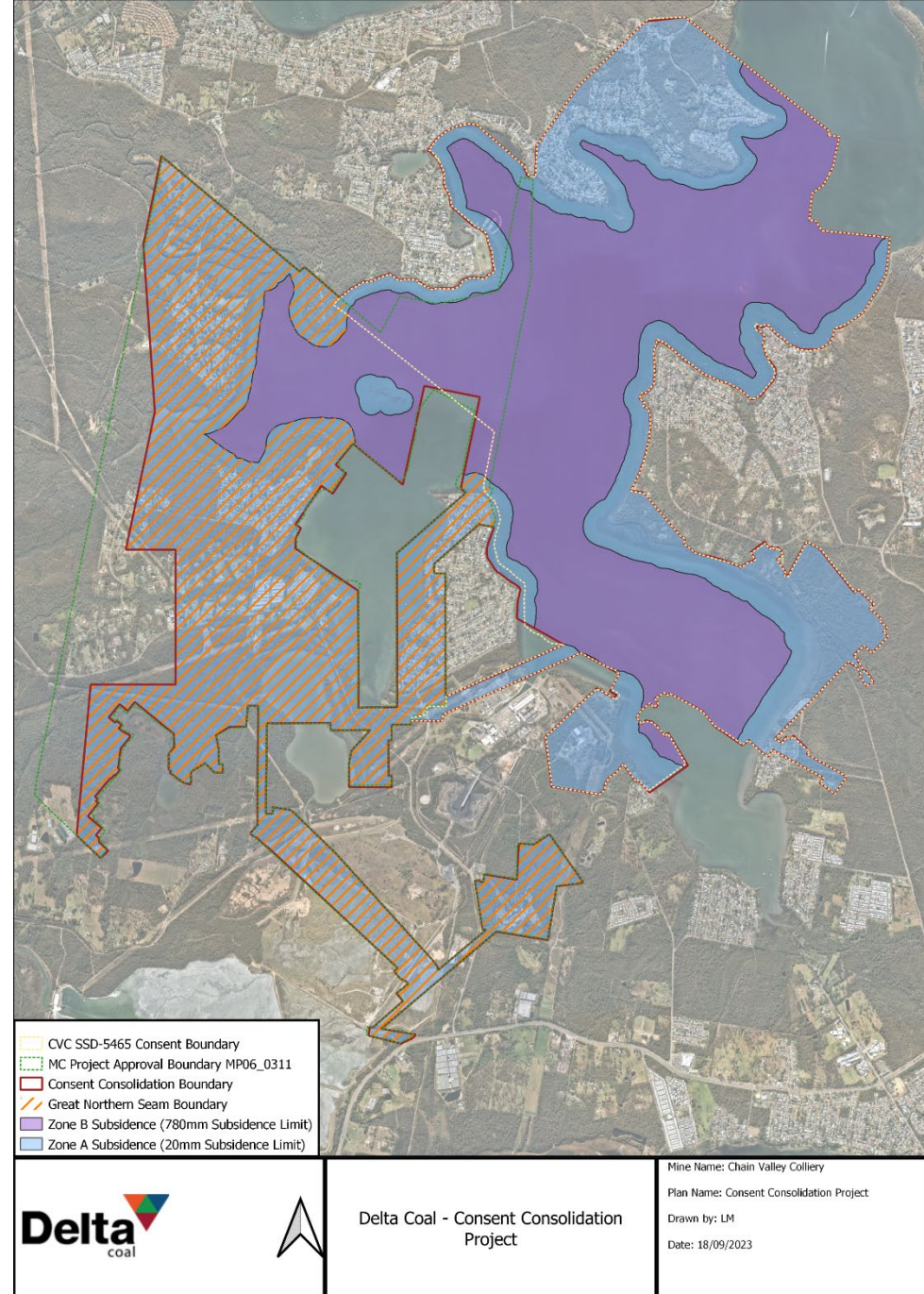
- EPL1770: Environmental Protection License - October 2023
- CVC SSD-5465 (MOD 4): Development Consent – August 2021
- Extraction Plan: MWS5 and NPA – March 2021 (modification being prepared for Extraction Plan update)

Mannering Colliery

- EPL 191 – Mannering Colliery – June 2023
- Mannering Colliery Project Approval PA 06_0311 (MOD 5) – June 2020

CONSENT CONSOLIDATION PROJECT

- Subsidence RFI from the IEAPM in progress of being addressed by Delta Coal.
- Greenhouse Gas RFI from the IEAPM in progress of being addressed by Delta Coal.
- Delta Coal informed that the process for support of the project by IEAPM has been made more stringent and is one of the initial applications received under current guidance.



ENVIRONMENTAL INCIDENTS / NON- COMPLIANCES

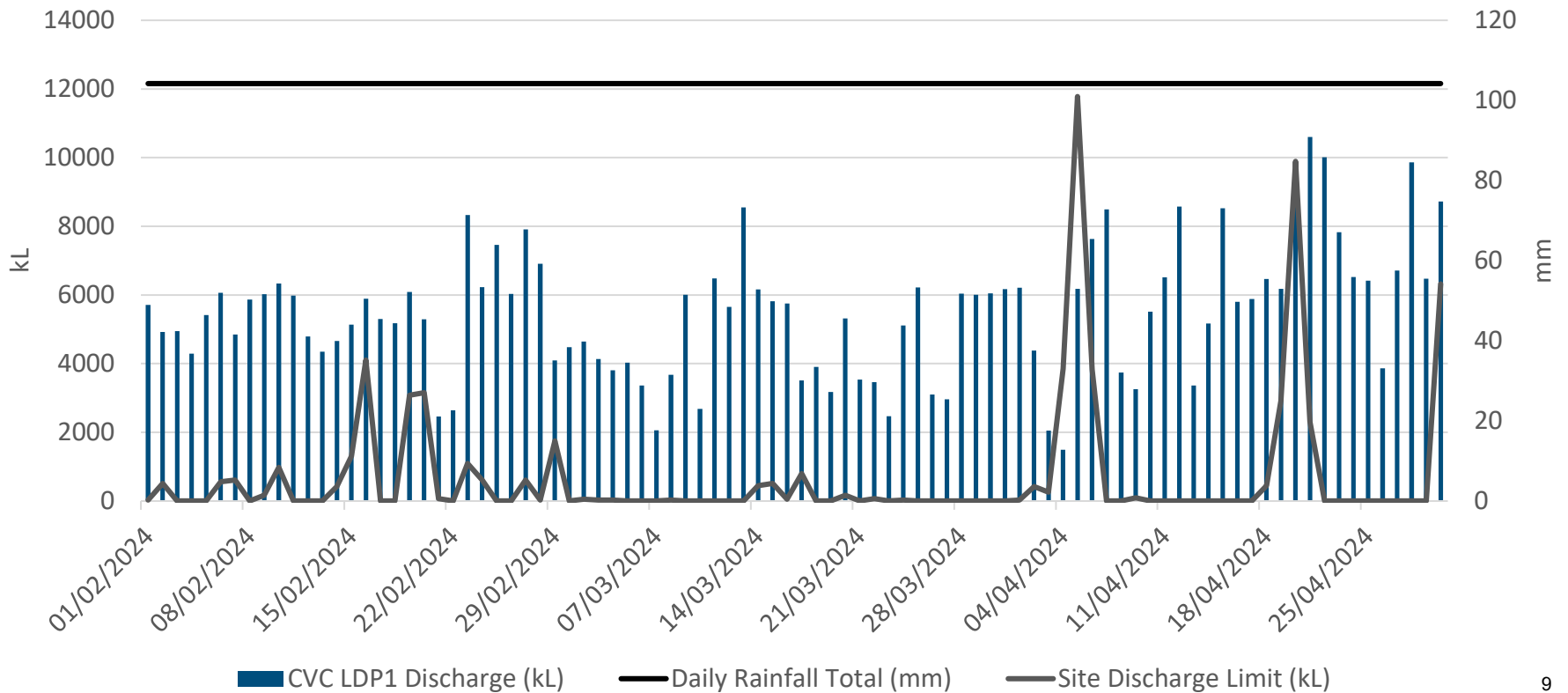


Summary of Incidents and Non-compliances

Site	Date	Incident / Non-compliance Type
CVC	27 February 2024	Faecal Coliform result of 280 CFU/100ml against limit of 200 CFU/100ml.
CVC	12 April 2024	Faecal Coliform result of 11,000 CFU/100ml against limit of 200 CFU/100ml. During high rainfall event, sample collected from Spillway.
CVC	24 April 2024	Oil and grease exceedance during monthly routine sampling at CVC, result of 12 mg/L exceeding the limit of 10 mg/L.

CVC Surface Water Daily Discharge and Rainfall Volumes

CVC LDP1 Discharge
1 Feb 2024 - 30 Apr 2024



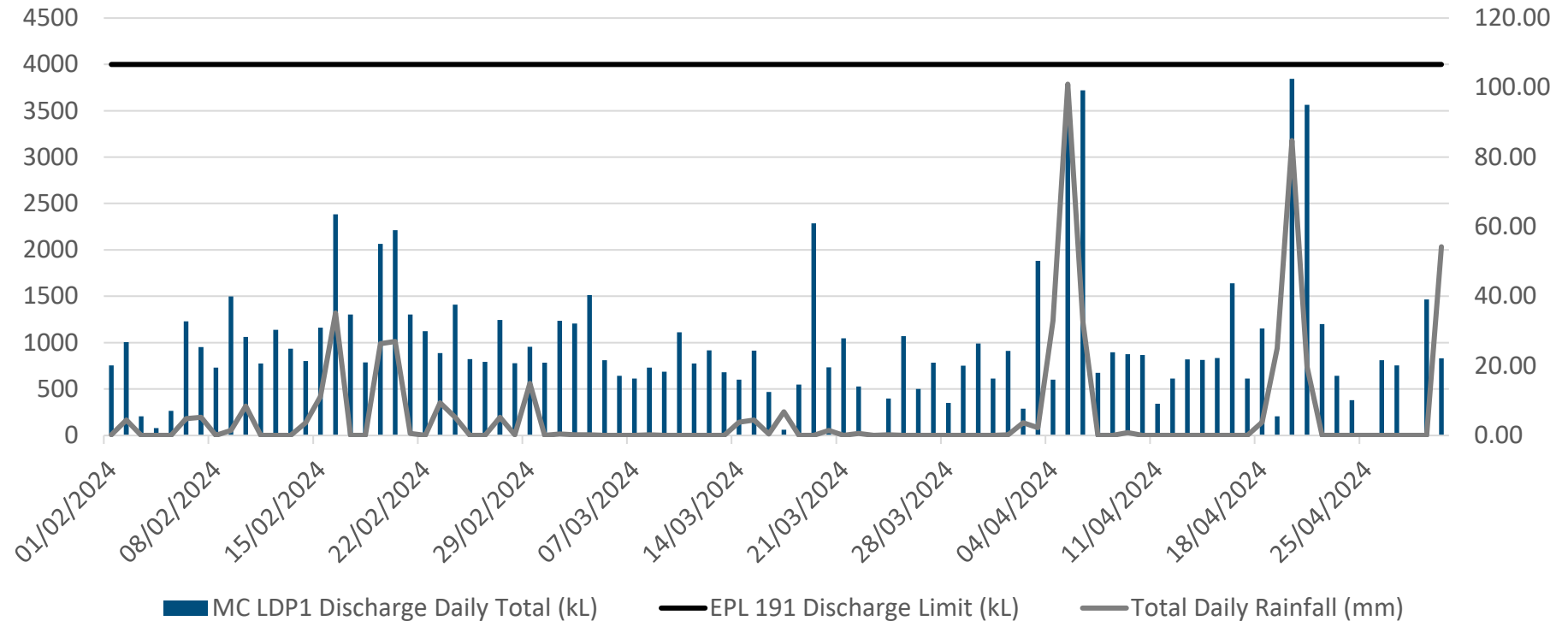
CVC Surface Routine Water Quality Monitoring (LDP1 Monthly)

LDP1	Limits	Feb – 2024	Mar - 2024	Apr - 2024
Faecal Coliforms (CFU/100ml)	200	280	40	5
Enterococcus CFU/100ml	40 Primary Contact (NHMRC, 2008 ¹) 150 Secondary Contact (NHMRC, 2008 ¹)	140	6	1
pH (pH Units)	6.5-8.5	7.66	7.64	7.75
Total Suspended Solids (mg/L)	50	11	14	<5
Oil and Grease (mg/L)	10	<5	<5	12

¹ National Health and Medical Research Council, *Guidelines for Managing Risks in Recreational Water*, 2008

MC Surface Water Daily Discharge Volume and Rainfall Volumes

MC LDP1 - Surface Water Daily Discharge
1 Feb 2024 - 30 Apr 2024



ENVIRONMENTAL PERFORMANCE

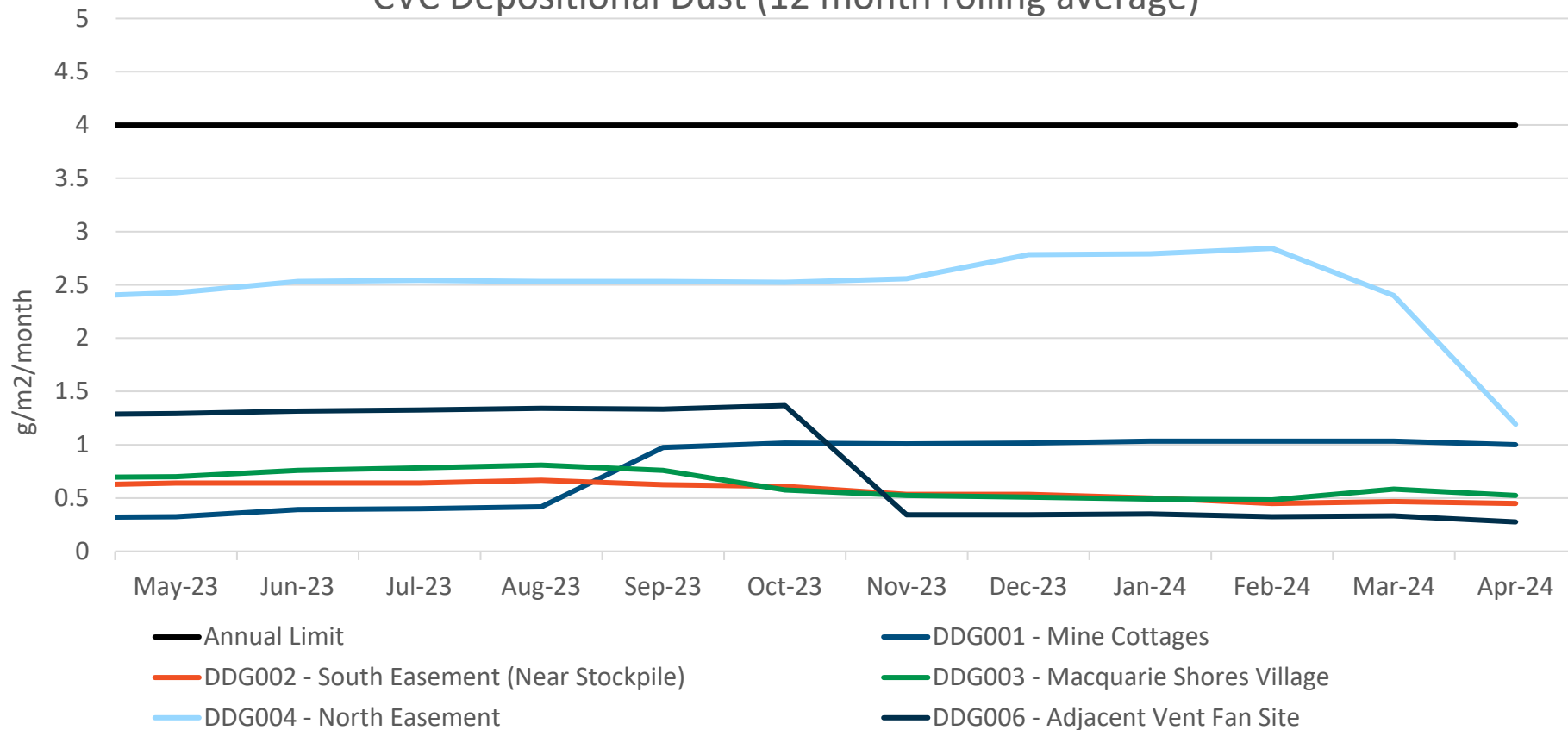


MC Surface Water Quality Monitoring

LDP1	Limits	Feb-2024 Average	Mar-2024 Average	Apr-2024 Average
Oil & Grease mg/L	10	<5	<5	<5
TSS mg/L	50	9.75	10.75	11
pH	6.5-8.5	7.85	7.95	7.86

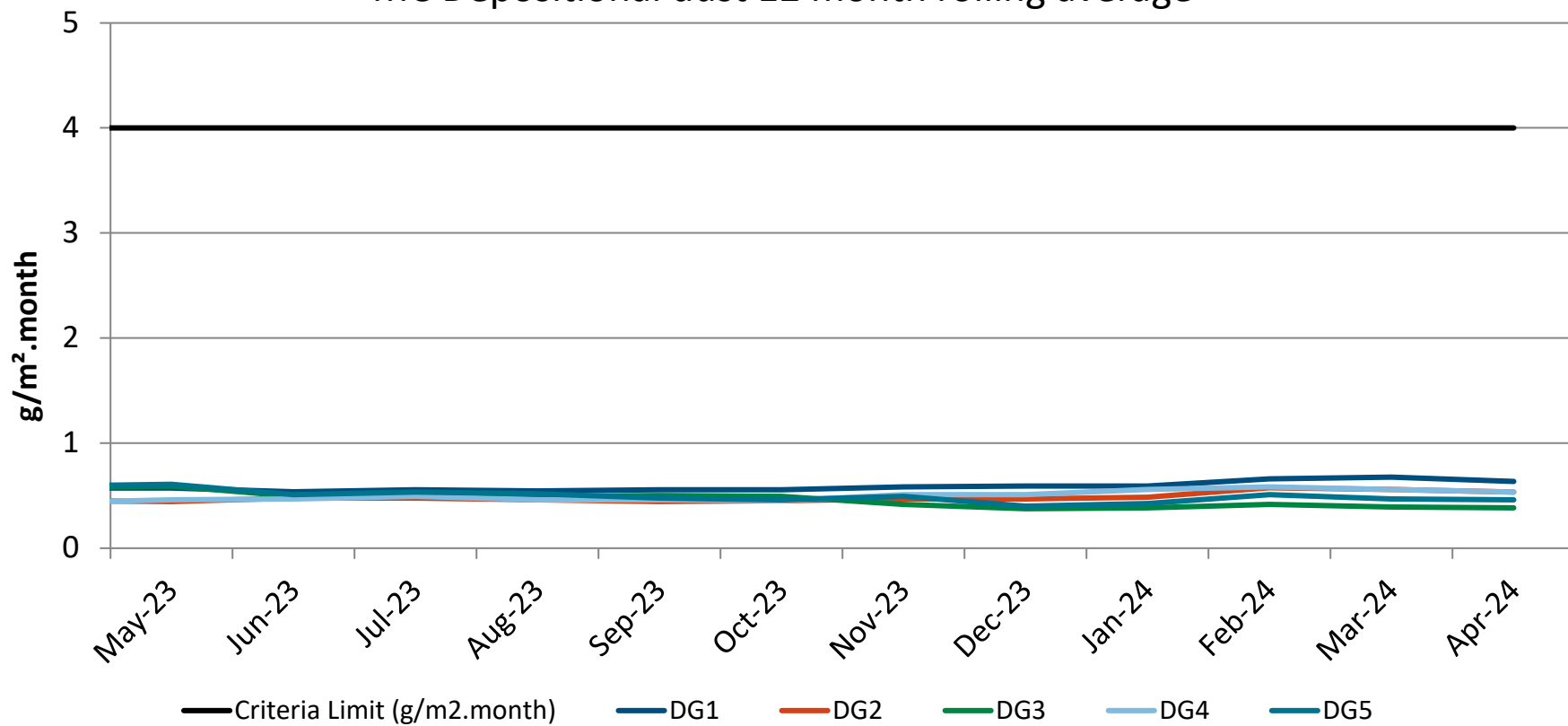
CVC Depositional Dust Monitoring

CVC Depositional Dust (12 month rolling average)



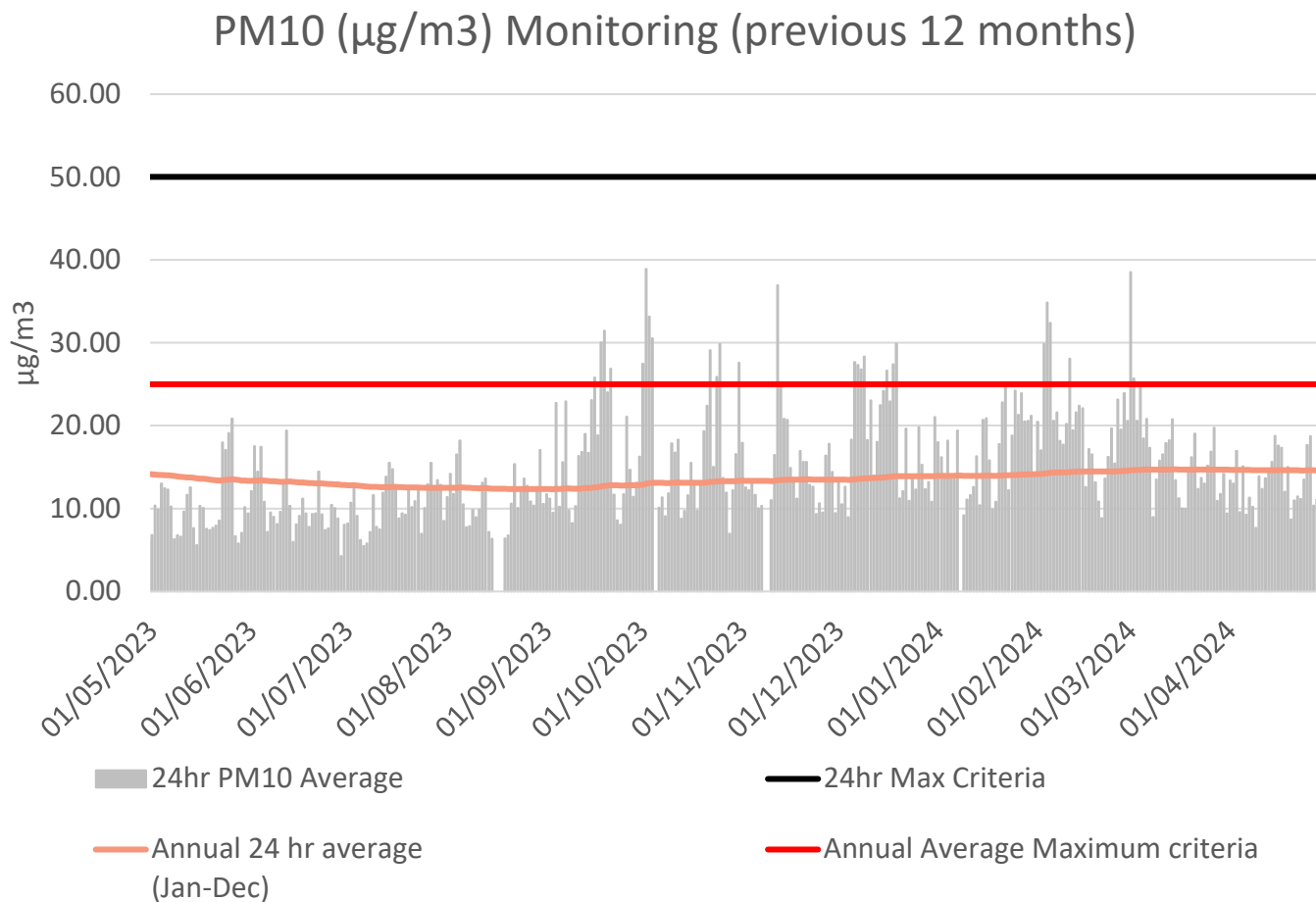
MC Depositional Dust Monitoring

MC Depositional dust 12 month rolling average



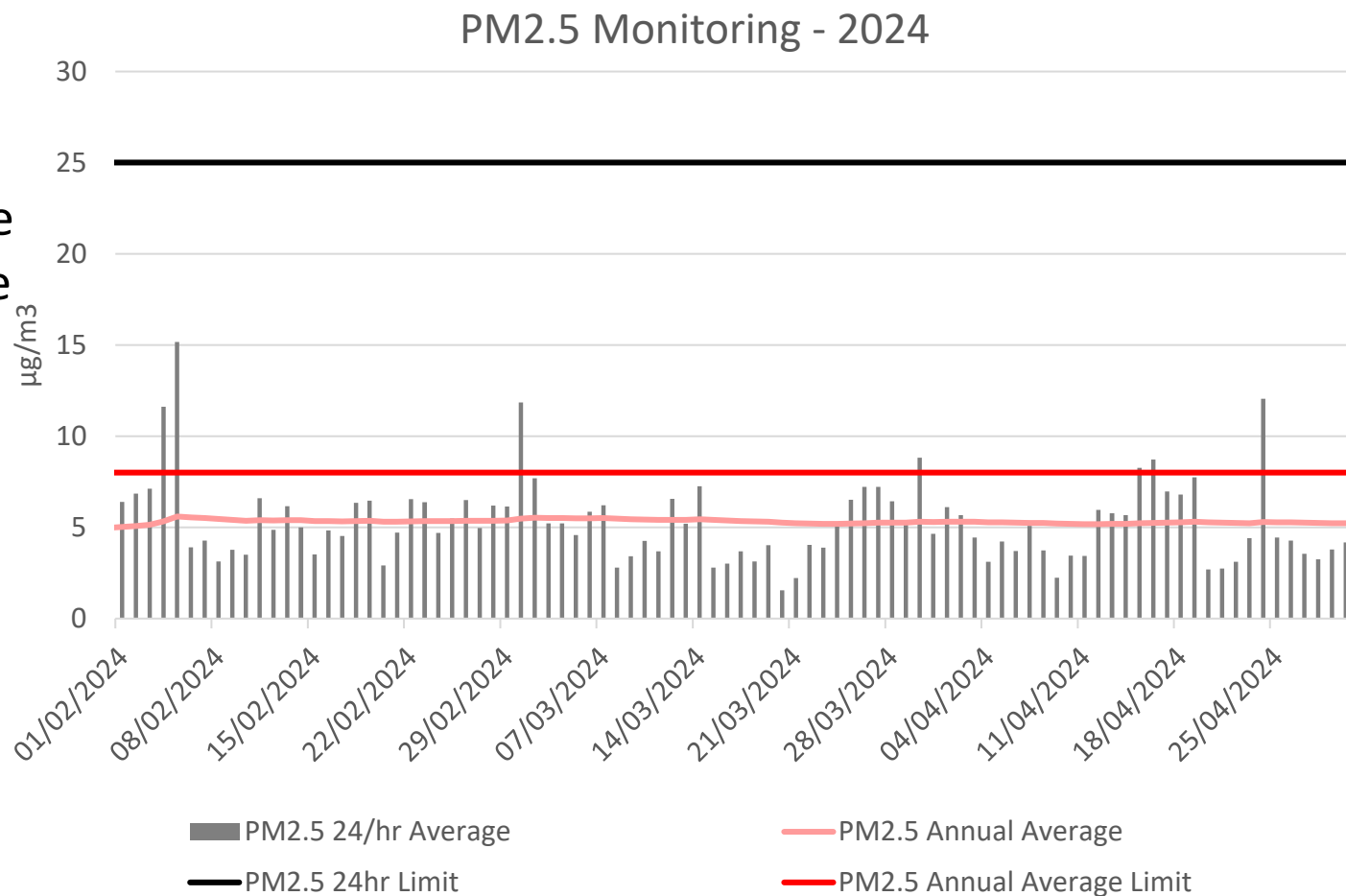
PM₁₀ Monitoring

No exceedances of the average annual or 24hr criteria have been observed within the last 12 months.



PM_{2.5} Monitoring

There were no exceedances of the PM_{2.5} daily average limit year to date.



ENVIRONMENTAL PERFORMANCE

Noise Monitoring Locations

Red = MC
Monitoring Location

Yellow = CVC
Monitoring Location



ENVIRONMENTAL PERFORMANCE



Noise Monitoring – MC

No Exceedances for MC noise monitoring between Feb-Apr 2024.

Highest result recorded during monitoring for a location is presented. Monitoring in Evening (6-10pm) and Night period (10pm onward).
IA = Inaudible.

Location	Date	Site Contributions, dB		Noise Limits, dB		Compliance status
		LAEQ	LAMAX	LAEQ	LAMAX	
February 2024						
RA1	21/02/2024	IA	IA	36	46	☑
RA2		<33	<35	40	45	☑
RA3		<35	<38	39	49	☑
March 2023						
RA1	19/03/2024	IA	IA	36	46	☑
RA2		IA	IA	40	45	☑
RA3		IA	IA	39	49	☑
April 2024						
RA1	22/04/2024	IA	IA	36	46	☑
RA2		IA	IA	40	45	☑
RA3		38	IA	39	49	☑

ENVIRONMENTAL PERFORMANCE



Noise Monitoring – CVC

Q1 2024 noise monitoring was undertaken on the 21 February 2024, 19 March 2024 and 26 March 2024.

The highest result for each monitoring location during the monitoring period is presented.

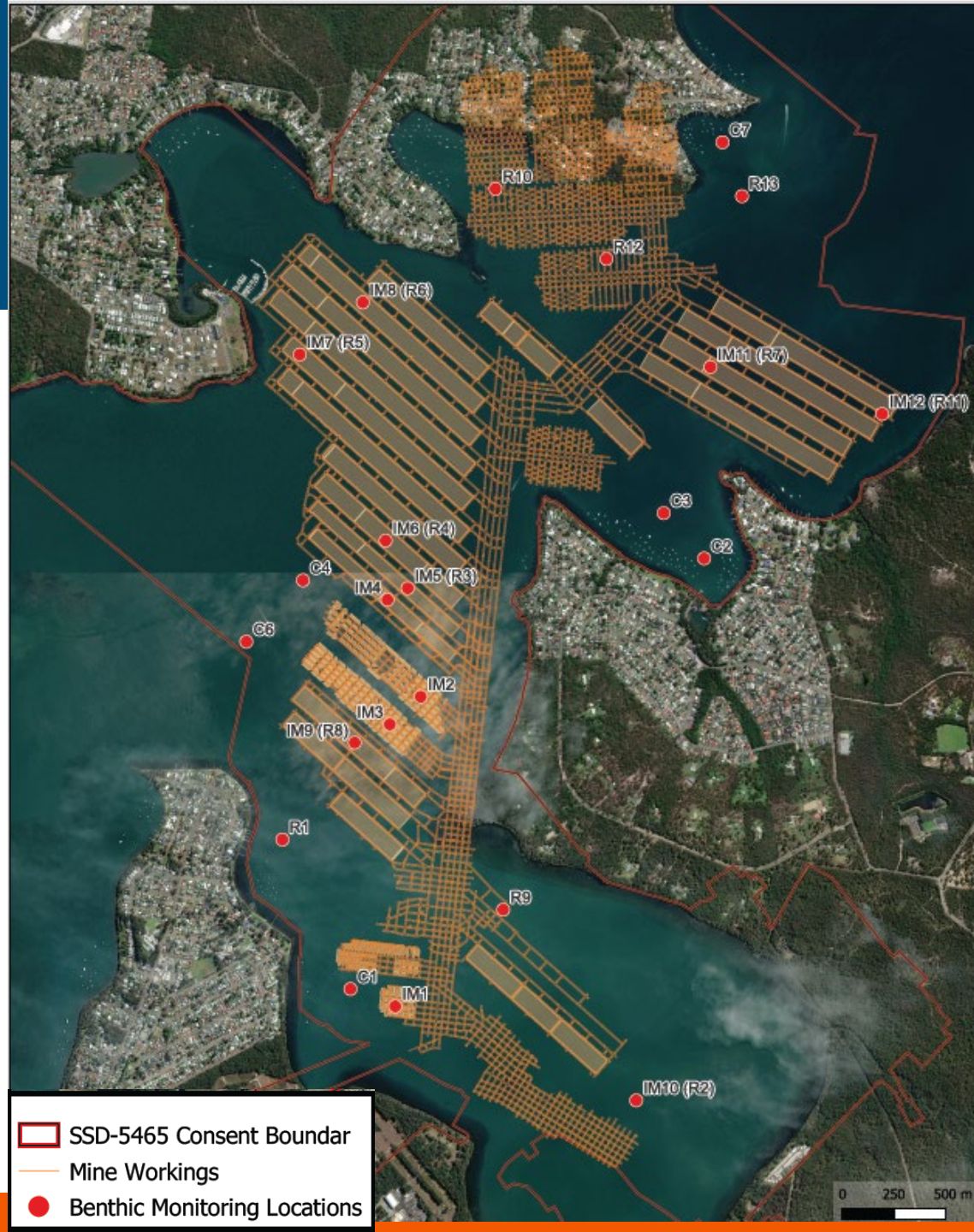
Monitoring Point	Site Contributions, dB		Noise Limit		Compliance Status
	LA _{EQ} (15 min)	LAMAX	LA _{EQ} (15 min)	LAMAX	
Chain Valley Colliery Q1 2024					
ATN001	IA	IA	38	45	☑
ATN002	IA	IA	49	54	☑
ATN003	IA	IA	36	45	☑
ATN004	IA	IA	35	45	☑
ATN005	IA	IA	35	45	☑
ATN006	IA	IA	37	45	☑
R22	42 (40+2 LFN)	41	46	46	☑
R12	IA	IA	49	53	☑
R13	IA	IA	43	49	☑

ENVIRONMENTAL PERFORMANCE

Benthic Communities Monitoring – Autumn 2024

Monitoring includes sampling of re-occurring sites including sites of potential impact and control sites.

Monitoring for 2024 did not identify impact to benthic communities in the research area as a result of mining induced subsidence.



Community Complaints between 1 Feb 2024 and 30 April 2024:

- Chain Valley Colliery - Nil community complaints received in period.
- Mannering Colliery - Nil community complaints received in period.

General Enquiries between 1 February 2024 and 30 April 2024 :

- No enquiries received



Questions?